

2023

Welcome to the Southwestern Indiana
Master Gardener Association's 11th biennial

TOUR DE FLEUR

Garden Walk

JUNE 24 & 25 • 9 A.M. - 4 P.M. CT

12 Spectacular Gardens in
Evansville and Newburgh



EVANSVILLE
Living



P PURDUE
UNIVERSITY Extension

PURDUE EXTENSION
MASTER GARDENER PROGRAM

Colonial Classics

**Bringing beauty to your
home for over 60 years!**

The Tri-State's premier garden center
and landscape design company



**GARDEN CENTER • LANDSCAPE DESIGN & MAINTENANCE
THURSDAY FIBERGLASS POOLS DEALER**

Monday - Saturday: 8 a.m. - 6 p.m. | Sunday: 10 a.m. - 4 p.m.

3633 Epworth Road, Newburgh, IN 47630 | (812) 853-6622

colonialclassics.net

Table of Contents

Advertiser Index	2
Supporters	3
Thank You	4

GARDEN NUMBER AND HOSTS

1 Master Gardener Display Garden	7
2 Butsch/Sippel Garden.....	9
3 McCarty Garden.....	11
4 Teal Garden	13
5 Roop Garden.....	15
6 Mulzer Garden	17
7 Bacon Garden	21
8 Lamb Garden	23
9 Buccilli/Gambill Garden.....	25
10 Lewis Garden	27
11 Deitz Garden	29
12 Seaman Garden.....	31



Map	18-19
Master Gardener Information	32

Advertisers

AP&P Soilmasters.....	20
Acclaim Graphics	30
Ancient Roots.....	22
Caplan's Tree & Landscape Consulting	28
Colonial Classics Landscape & Garden Center.....	Inside Front Cover
Evansville Living.....	5
Frontier Liquors.....	Inside Back Cover
Hastings Plants, LLC	26
Igleheart Gardens	16
Indiana Native Plant Society - SW Chapter.....	12
Landscapes by Dallas Foster.....	20
Nature by Design	24
New Harmony Native Trees & Shrubs	28
On The Spot Utility Resources LLC.....	Back Cover
Popham Construction.....	26
Purdue Extension.....	30
Robin's Nest.....	10
Scott's Irrigation Plus	24
Shannon Aleksandr's Salon & Spa	8
Snow's Landscape	22
SWIMGA Cook Book.....	14

Supporters

Bee Grateful Honey - Rita & David Howell

Charlie's Compost

GO@T Mobile Auto Detailing, Jesse Weber

Jan Corso

Kathy Kellems

Linda Stocks

Pam Childers

Pat Singer

Patty Griffin

Skin Refinery Skincare Center

The Reitz Home Museum

The Warrick Parks Foundation

Tucker Publishing Group

Tyler Frounfelter, D.D.S., Franklin Street Dentistry



We could not have our Garden Walk without the support of our local businesses and supporters. Please retain this book and patronize them.

We thank you sincerely!

Thank You

Event Chairs: Patty Griffin and Pam Childers

Garden Walk Booklet: Patty Griffin, Pam Childers, and Tucker Publishing Group

Ticket Distribution: Sue Blakeslee

Publicity: Patty Griffin and Pam Childers

Ads: All of our garden advertisers

Ticket Sales: Schnucks Markets, Robin's Nest, Snow's Landscape, and SWIMGA Master Gardeners

GARDEN COORDINATORS

2: Diane Mason and Susan Cooper

3: Linda Stocks

4: Debbie Holzmeyer

5: Mary Bischoff and Carol Slow

6: Sheila Haas and Kimberly Lynn

7: Delana Davis

8: Julia Rang and Karen Flittner

9: Sue Blakeslee

10: Gail Angel

11: Cyndi Zinn

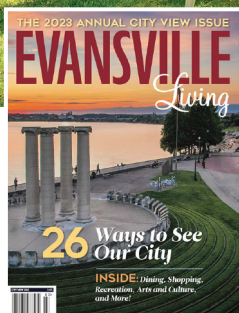
12: Carol Peerman and Carolyn Ruminer

PLEASE OBSERVE

- Photography is encouraged
- No strollers on lawns
- No smoking
- Public restroom is only available at the #1 Display Garden
- Parking: Please follow signs or garden parking director

Relax in the garden with

EVANSVILLE LIVING



1-YEAR SUBSCRIPTION ONLY \$10



Use code **“GARDEN23”** • Visit evansvilleliving.com or scan the QR code

Evansville Living magazine is your connection to local culture, food, events, places to visit, and beautiful homes and gardens throughout the Tri-State.

EVANSVILLE
Living



SWIMGA Display Garden

3501 E. Lloyd Expressway



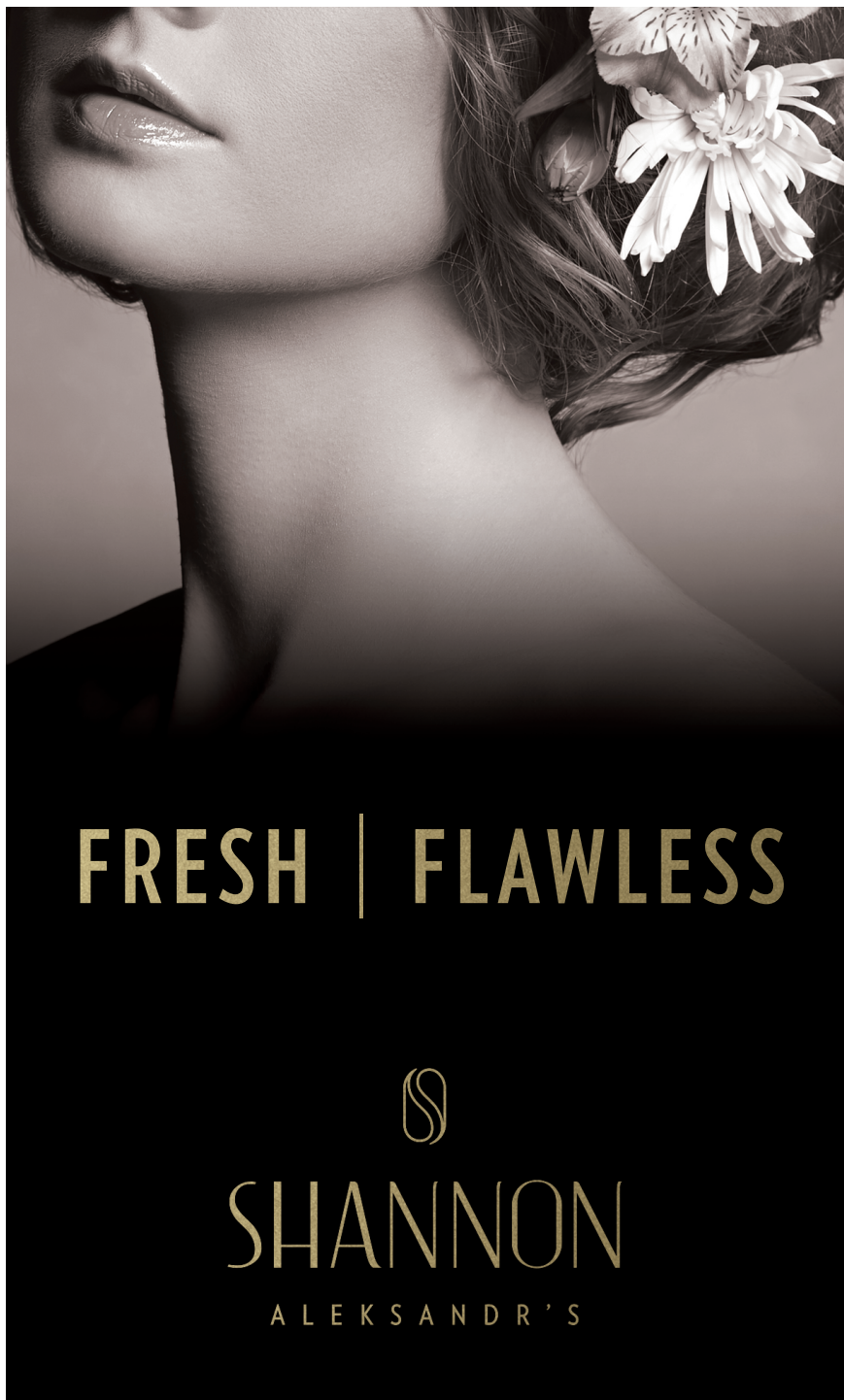
1



THIS FABULOUS GARDEN is the pride and joy of the Master Gardeners of Southern Indiana. The 1.2-acre property demonstrates the amazing variety of flowers and vegetables that can be grown in the Tri-State.

You are sure to find something to appreciate in one of the 20 themed areas such as Sensory Garden, Cottage Garden, Rain Garden, Berry Patch, Iris Walk, Sculpture Garden, Shade Garden, and All-America Selections Garden, along with a gazebo and restored log cabin. Master Gardeners volunteer their time planning, tilling, planting, weeding, and harvesting. The result of many hours of hard work is the beauty for you to behold and the more than 8,000 pounds of produce donated to the Tri-State Food Bank annually.

Check our website for monthly education topics held, weather permitting, during the summer months. Open during daylight hours for self-guided tours.



FRESH | FLAWLESS



SHANNON

A L E K S A N D R ' S

Butsch/Sippel Garden

Anne & Yvonne

7109 Taylor Ave.

2



WELCOME TO A Homegrown National Park®! This garden is part of the largest cooperative conservation project ever attempted. Conceived by Professor Doug Tallamy, the HNP will regenerate biodiversity by creating a network of native plants, one yard at a time.

Trees and shrubs including dogwood, oak, holly, viburnum, and hydrangea provide wildlife food and habitat. The trickling of the bubble rock beckons songbirds. Open prairie and woodland areas on this quarter-acre lot are punctuated with nature-inspired art nearly as beautiful as the perennial ferns, flowers, and magnolias that surround it.

The homeowners invite you to tour an environment that is pleasing to gardeners, pollinators, and songbirds alike. The garden is a Certified Wildlife Habitat, Certified Indiana Native Plant Garden, and a Certified Monarch Waystation.



Robin's Nest

Your hometown choice for homegrown Proven Winners, Vegetable Plants, Herbs, Annuals, Perennials, House Plants, Succulents, Shrubs, Berry Bushes, Garden Seed, and Floral Arrangements.

774 East Main Street Boonville IN 47601 812-897-4591

www.robinsnestflowers.com

YOUR LOCAL SOURCE FOR

Proven Winners



Thank you to our 2023 Grow to Share participants.

With the help of these amazing people hundreds of vegetable seeds and plants reached their potential helping to feed thousands in the tri-state.

Without generous, kind, hard-working people coming together things like this would never be possible.

THANK YOU!

McCarty Garden

Julie & JT

1012 Creekside Court, Newburgh

3



IT SEEMS LIKE ONLY YESTERDAY that my wife, Julie, and I moved into a quiet, somewhat off-the-beaten-path neighborhood called Jefferson Park. A large project awaited us: Our property included about three-fourths of an acre of unrelenting poison ivy, sticker bushes of all descriptions, dead and decaying trees, and numerous drainage challenges, not to mention the ground hornets that stung the living daylight out of me.

In 2008, this grand undertaking started, and it ain't over yet. Whenever we are home any weekend that weather permits, I'm working (playing) in our yard. Over the past 15 years, our property has expanded to almost three acres. We have installed a swimming pool, pergola, outdoor kitchen, waterfall, dry stream bed, and more. We truly hope you will enjoy seeing and experiencing the beauty and diversity of plants in our little paradise. —JT McCarty

Indiana Native Plant Society-SW Chapter

Native Plant Sales

Both sales
held at the
SWIMGA
Display
Garden

3501 E Lloyd Expwy
Evansville, Indiana

SPRING

June 3, 2023
9am-1pm CDT

FALL

Sept. 2, 2023
9am-1pm CDT

2023 Chapter Meetings

Open to the Public!

January 21st

March 25th

May 20th

July 15th

September 16th

November 18th



Indiana Native
Plant Society
Southwest Chapter



for more information,
email inps.sw.secretary@gmail.com or visit indiananativeplants.org

Teal Garden

Myra & Mike

6611 Juniper Road, Newburgh

4



THIS GARDEN IS A CERTIFIED WILDLIFE HABITAT and provides a lovely aquatic theme that includes a large Japanese koi pond and several water gardens. Great blue heron, kingfishers, and smaller herons have all claimed the lake as their territory. The lake is bordered with azaleas, hostas, and ajuga.

Additional bird visitors — including bluebirds, goldfinches, mockingbirds, swallows, chickadees, blue jays, and robins — feel at home choosing from the various birdhouses, birdbaths, and feeders. Flowering plants, shrubbery, and bulbs provide the color palette for the annual and perennial gardens. Herbs and vegetables are conveniently located near the kitchen door and tucked among elephant ears and banana plants.

There is a pollinator garden that attracts butterflies and an exhibit with honeybees, and maybe a honey tasting!



\$20

Now available at
SWIMGA.ORG

Special pricing available
at 2023 Garden Walk!



TO STAY UP TO DATE ON SALES EVENTS
AND CURRENT RETAIL LOCATIONS,
FOLLOW US OR VISIT SWIMGA.ORG

DIG IN

TO MORE THAN 300 RECIPES FROM THE MEMBERS OF SWIMGA!

In celebration of the
30th anniversary of the
Southwestern Indiana
Master Gardener Association,
“**HARVEST: 30 YEARS OF
GROWING AND COOKING**”
is available for purchase!

Organized by growing
season, this unique cookbook
combines delicious recipes,
beautiful photography, hints,
and quotations to motivate
you to bring the garden into
your kitchen. Whether you
grow your own produce or
shop local farmers markets,
this book is for you!



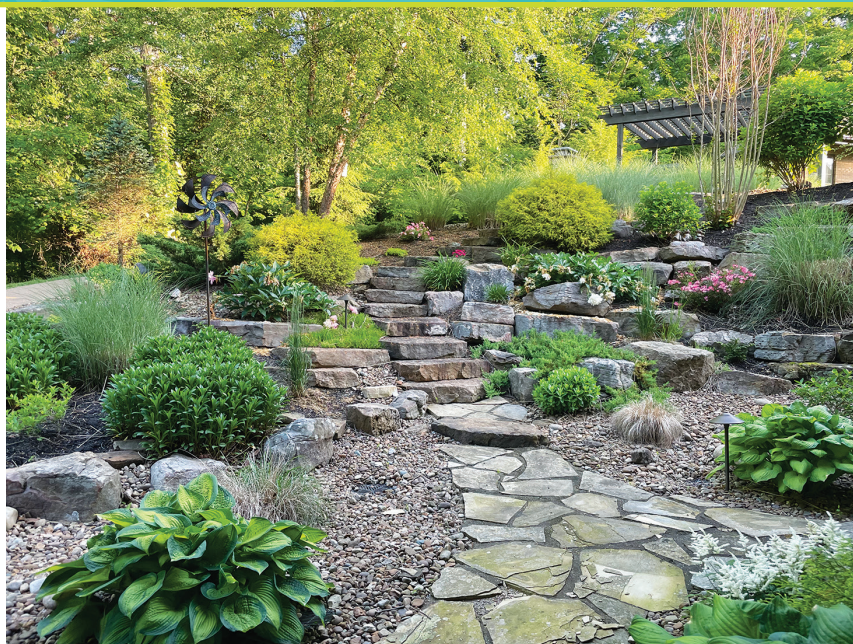
Roop Garden

Laura & Rick

6600 Deertrail Court, Newburgh



5



AS YOU APPROACH the front door of this brick ranch house, you'll hear the bubble of a stone fountain and see daisies turn toward the morning sun. As you wander on the path to the backyard, you will pass daylilies, peonies, and roses accenting the natural stone staircases. An outdoor fireplace and grill flank the pergola.

Ornamental grasses surround the terrace, while birdhouses invite winged friends to frolic in the trees beyond the manicured lawn. Hostas lounge in the shaded area under the steps to the screened-in porch. Crepe myrtles, oak leaf hydrangeas, and magnolias give color to the landscape in both spring and summer. Arborvitae and flowering trees shield the basketball court from the road.

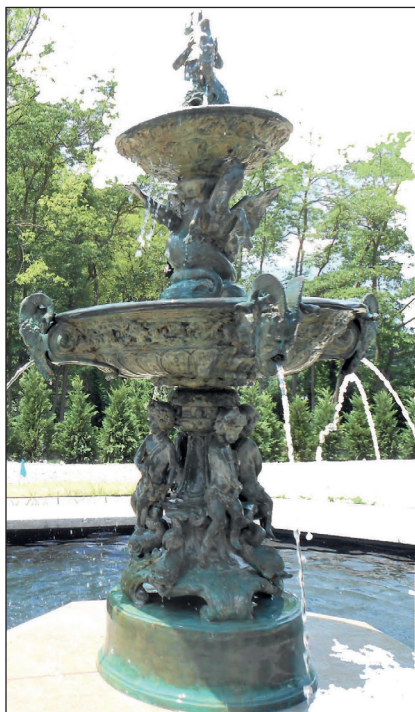
Far from complete, the Roops have plenty of room on their 1.3-acre lot to add trees, shrubs, and flowers.

About SWIMGA

The Southwestern Indiana Master Gardener Association, Inc. (SWIMGA), a nonprofit organization formed to educate the community about proper horticultural practices, in cooperation with the Purdue University Cooperative Extension Service and in conjunction with Purdue University Master Gardener Program, shall: educate members and the general public on horticultural techniques; demonstrate proper gardening, tree care, lawn care, and pest control techniques as recommended by Purdue University Cooperative Extension Service; and provide service to the community through improving the environment, helping others to build and maintain gardens and empowering the community to a healthy lifestyle through gardening.

SWIMGA's Display Garden contains 22 different types of individual gardens used to conduct demonstration and education of different types of garden areas and plants. Harvests from one of the gardens in the Display Garden sends fresh produce to local food pantries throughout the growing season. Along with the Display Garden, SWIMGA also maintains and educates at these Community Gardens located in Vanderburgh, Warrick and Posey counties.

The proceeds from the Garden Walk will be used to further education in all these endeavors.



Please email
Igleheart@IgleheartGardens.com
or visit
IgleheartGardens.com
for more information

Mulzer Garden

Joyce & Jim

8799 Angel Drive, Newburgh

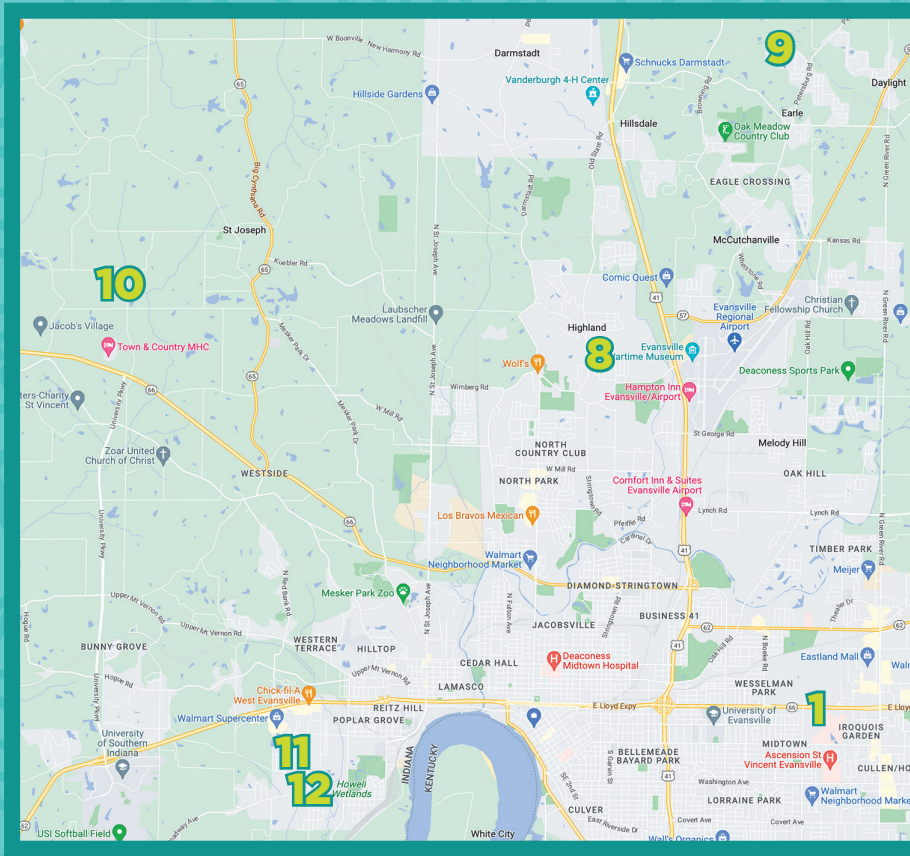
6



JOYCE AND JIM MULZER have a relatively new, traditional-style home and garden at only four years old. This suburban home sits on two city lots. It has raised landscaped beds highlighted with large native stones and accent lighting. There is a large patio with a grilling area and a tranquil water feature.

This garden contains both sun and shade areas with tall evergreens for privacy. Flowering perennials and annuals accent the many lovely bushes highlighted in the gardens. Beautiful flowerpots are dotted around the front and backyard. Each pot overflows with flowering annuals.

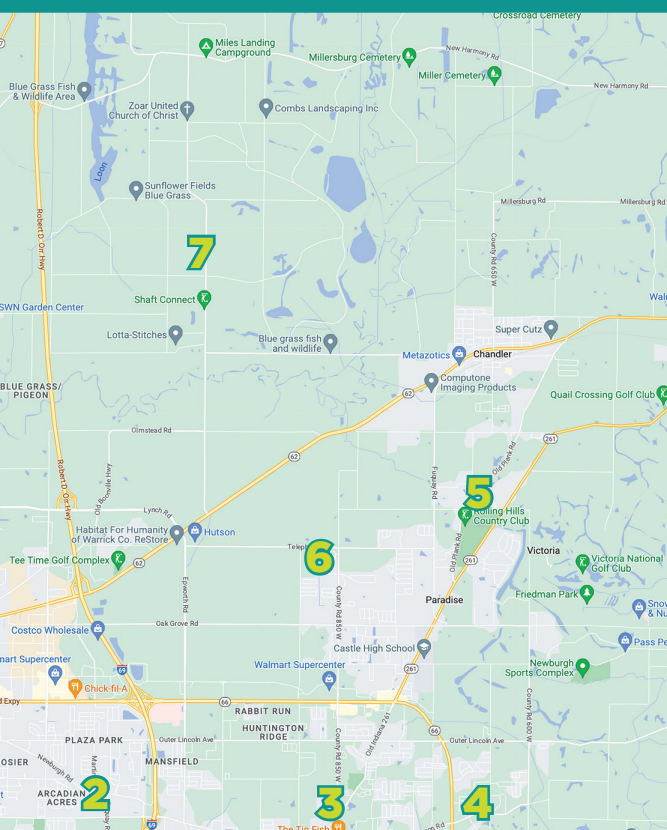
There is also a small raised vegetable garden. From the Mulzers' previous residence, they brought along tea roses gifted from Jim's aunt, as well as many ferns, hostas, and coral bells. All combine to make the Mulzers' garden a tranquil, lovely place to visit and admire.



1. 3501 E. Lloyd Expressway, Evansville
2. 7109 Taylor Ave., Evansville
3. 1012 Creekside Court, Newburgh
4. 6611 Juniper Road, Newburgh
5. 6600 Deertrail Court, Newburgh
6. 8799 Angel Drive, Newburgh

Garden Walk

LOCATIONS



7. 10300 Meadowlark Hill Road, Chandler
8. 6809 Briar Court, Evansville
9. 13834 Castle Brook Road, Evansville
10. 8230 N. St. Joseph Road, Evansville
11. 815 S. Red Bank Road, Evansville
12. 875 S. Red Bank Road, Evansville

AP&P Soilmasters, LLC

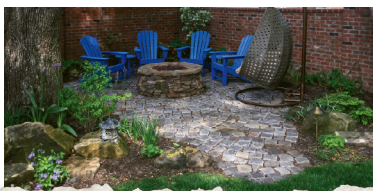
Aged Manure with Compost • Landscape Mix
Blended Top Soil

Henry Schlensker, Manager

4100 Kansas Rd.
Evansville, IN 47725
Phone: 812-867-3821
Henry: 812-483-6027
Josh: 812-457-6607



Inspiring with nature ... for lives with insight



Landscapes
by **Dallas Foster,**
Inc.

Design • Install • Maintain
(800) 659-0719
www.dallasfoster.com

Vincennes
3729 N. Camp Arthur Road
(812) 882-0719

Evansville
829 Canal Street
(812) 423-7098



Bacon Garden

Ron & Karen

7

10300 Meadowlark Hill Road, Chandler



RON AND KAREN BACON'S lovely ranch home is situated in a rural setting with three acres of gardens and a 15-acre lake. The entire area is sprinkled with water features, including a bubble rock, goldfish pond with waterfall, and small fountains. Benches dot the landscape, offering spots to enjoy the copious flowers.

The gardens primarily are full sun with an abundance of perennial and annuals. The annuals get their start in the Bacons' very own greenhouse. Plan to see an array of flower varieties such as daylilies, roses, red honeysuckle, crepe myrtles with petunias, salvia, vinca, marigolds. A huge vegetable garden provides food crops for the Bacons and loved ones.

The property was built on disturbed mine land, which offers its own gardening challenges. But you will notice this has not deterred the Bacons in creating a colorful, tranquil garden haven.

OPEN YEAR-ROUND



- HIGH QUALITY PLANTS

- GIFT SHOP

- WELCOMING EXPERIENCE



- EXCELLENT CUSTOMER SERVICE

- PET FRIENDLY

Snow's
Landscape
& Nursery



CONTACT US FOR
LANDSCAPING, MOWING, PATIOS, AND MORE

WWW.SNOWSLANDSCAPE.COM
FACEBOOK.COM/SNOWSLANDSCAPENURSERY

Be the Solution



Ancient Roots
Native Nursery, LLC

812-729-ROOT

ancientrootsnativenursery.com

Plant Native

Lamb Garden

Ann

6809 Briar Court

8



THIS SUNNY GARDEN surrounds a suburban home in a North Side neighborhood. The garden is filled with spring-flowering daffodils, tulips, and azaleas.

The home features a wrap-around deck that holds numerous pots of annual flowers. Azaleas line the entryway, flanked by bearded iris. A stacked stone retaining wall holds a large planting bed, which is in partial shade and contains more azaleas and tall hostas.

The backyard includes a large bed with two tall cypress trees, Knock Out roses, lilacs, and hydrangeas. Two aged red bud trees shade the garden, which is filled with more hostas. This bed also contains irises, giving it color throughout spring and summer. Several other planting beds contain peonies, liriope, hostas, and annual flowers to catch your interest. This homeowner says she loves being out in the sun, tending her garden.



LANDSCAPES, INC.

SPECIALIZING IN

**Landscape Design
Hardscapes
Drip Irrigation
Outdoor Lighting
Maintenance
Garden Center**

Mark E. Glover, Owner
2563 N. Bruceville Rd. • Vincennes, IN • 812-726-1122
www.naturebydesignlandscapesinc.com

Scott's Irrigation Plus

812-745-3604

Scott Hankins
Owner

13825 North Blann Road
Oaktown, Indiana 47561

scottalanhankins@gmail.com

Buccilli/Gambill Garden

Anthony & Keith

13834 Castle Brook Road

9



VISITORS TO THE Buccilli/Gambill gardens will find much to explore and enjoy in this nearly three-acre country estate. Limestone walls, boulders, and benches decorate the gardens featuring cedar, birch and spruce trees, crepe myrtle, hydrangeas, Luyken laurel, and Japanese maples, along with a variety of perennials and annuals.

Whether relaxing on the second-story deck bursting with flowering containers, sitting on the stone bench among the gardens under the oak trees, or resting in the gazebo enjoying the sounds of the birds and nearby chimes, every visitor can enjoy the scenic view of the lake, the focal point of the back yard.

In addition to the sun, shade, vegetable, and herb gardens, colorful birdhouses, statues, and art paint this picturesque landscape.

Building and Remodeling By Popham



POPHAM
CONSTRUCTION

(812) 479-5850 pophamconstruction.com



Hasting Plants

**LARGE VARIETY
HEALTHY HOMEGROWN PLANTS**

Annuals, Perennials,
Vegetable Plants,
Roses, Hanging Baskets,
Garden Art

We're Well Worth the Drive!

CURRENTLY CLOSED FOR 2023

WE LOOK FORWARD TO SEEING YOU
MID-MARCH TO MID JUNE 2024!

www.hastingplants.com

812-838-2164



Go west of Mt. Vernon, take
Hwy 69S approx. 6 miles. Look
for the sign. We're 1 mile off the
Hwy on Hasting Lane.

Lewis Garden

Tom & Robin

8230 N. St. Joseph Road*

*Near University Parkway

10



YOU WON'T WANT TO MISS this garden, situated at the heart of 29 acres next to a serene lake and a lakehouse lodge. The property is home to 43 species of trees and native wildlife. Robin's flower gardens include full sun, shaded, and woodland areas, and both perennial and annual plants.

Winding garden paths lead past memorial water features, alongside huge stones hauled from the foundation of a log cabin, a handcrafted Peace Pole, graceful arbors and trellises, and comfortable seating. Plants are meticulously labelled and divided into themed beds such as the moonlight garden, fairy glade, wildflower, and shade gardens.

Highlights include Robin's mother's Seven Sisters rose bush and her grandmother's multi-colored irises. Tom's extensive raised-bed vegetable garden is fenced and surrounded by berry bushes.



New Harmony Native Trees and Shrubs

(Bur Oak Tree Services, LLC)

1129 E. Church St., New Harmony, IN 47631

812-781-8113

We grow native species that support native wildlife using a patented system to provide an easy to install containerized plant, 2 to 6 feet tall, with a superior root structure, grown in local soil. We provide expertise before and after planting. Plants guaranteed for 2 yrs if properly cared for.

- Consulting ISA Certified Arborist (IN-3447A)
- ISA Tree Risk Assessment Qualification ®
- Tree Health Care (insects, fungus, soil health)
- Tree Pruning/Takedown serving Posey and Western Vanderburgh Counties



Tree Appraisals • Tree Risk Assessments • Landscape Reviews
Tree, Landscape, and Lawn Diagnostics • Tree Preservation During
Construction • Pruning of Fruit and Ornamental Trees

Larry Caplan, Certified Arborist

Larry@CaplanTree.com

(812) 449-7067

www.CaplanTree.com

Deitz Garden

Kean & Joann

815 S. Red Bank Road

11



GET READY FOR A SURPRISE when you step into what looks like a tropical paradise behind the Dietzes' ranch-style home situated on a one-acre lot. They have a varied collection of plants that have been placed in a woodland setting consisting of some of nature's most exotic plants. Included are many kinds of elephant ears and banana trees as well as more than 300 varieties of hostas and other shade-loving plants.

Additionally, there are at least 25 varieties of Japanese maples. Be sure to check out the amazing Triceratops dinosaur in the middle of the circular drive in the front yard. The Dietz home is close to the West Side Walmart and is familiar to anyone who has visited their annual plant sale. This year, there will be a limited number of plants for sale during the Garden Walk. Come and enjoy this lovely garden with so many unusual plantings.



Graphic Design
Brochures
Labels

Business Cards
Custom Tabs
Envelopes

Letterhead
Manuals
Carbonless Forms
and more...

What can we print for you?

908 N. Garvin St.
Evansville, IN 47711
812.424.5035
info@acclaimgraphics.com
www.acclaimgraphics.com

ag **acclaim**
graphics, inc.



PURDUE UNIVERSITY Extension

Bringing research-based education and resources for

- agriculture & natural resources,
- 4-H & youth development,
- health & human sciences,
- nutrition education, and
- community wellness



CONNECT WITH US!
vanderburghces@purdue.edu
812-435-5287

Your Educational Partner...*FOR LIFE!*

Seaman Garden

Tami & Skip

875 S. Red Bank Road

12



THESE LOVELY GARDENS sit on a dazzling five-acre plot alive with vegetation. The Colonial-style home is a standout surrounded with well-planned stone boulders, convenient sidewalks, and a peaceful patio. Don't miss the stunning large stone fire pit.

The acreage is primarily a shade garden with numerous large trees, an abundance of hydrangea varieties, and many flowering plants. The garden includes almost all flowering shrubs and perennials, which lend a more carefree aspect to gardening with the expectation of lovely blooms on a yearly basis. With such large planting beds, the homeowners have focused on many giant hosta varieties.

You will also enjoy viewing an unusually large Japanese maple and the beautiful old hickory tree, which has been recognized as the Vanderburgh County Champion Shagbark Hickory Tree.

You Can Be A Master Gardener



To become a certified Purdue Master Gardener, you must complete the 15-week training offered each spring and fall. The class is provided by Purdue Extension and is taught by the County Educators. Classes are generally three hours each week. Tuition includes all materials. Students who complete the training program and pass the exam are Master Gardener Interns. Once you complete the necessary requirements and are certified, you must maintain a minimum amount of volunteer and continuing education activity.

**Contact the Vanderburgh Purdue Extension office
for more information at [812-435-5287](tel:812-435-5287).**



AN OPPORTUNITY TO GIVE BACK

Approximately 300 Master Gardeners of the Southwestern Indiana Master Gardener Association (SWIMGA) donate a yearly average of more than 22,000 hours to maintain and beautify the community through various projects. Annually, more than 8,000 pounds of produce are harvested and donated to the Tri-State Food Bank from their very own vegetable garden, located at the SWIMGA Display Garden.



FAMILY OWNED AND OPERATED SINCE 1946

- SEVEN CONVENIENT LOCATIONS -

- 3619 NORTH GREEN RIVER ROAD -

- 865 SOUTH GREEN RIVER ROAD -

- 514 WEST MILL ROAD -

- 1701 OAK HILL ROAD -

- 2950 COVERT AVENUE -

- 222 SOUTH RED BANK ROAD -

- 830 STATE STREET, NEWBURGH -

DOWNLOAD OUR APP FOR DELIVERY
AND IN-STORE PICKUP

WWW.FRONTIERLIQUORS.COM



Know what's **below.**
811 before you dig.



Dont' let things get *ugly* when all you wanted
was to **make them** *Beautiful.*



ON THE SPOT

UTILITY RESOURCES LLC

Always call 811 or submit an online request at
www.indiana811.org at least **2 business days** prior to doing
ANY digging- no matter how shallow!



It's FREE - It's EASY - and IT'S THE LAW.